



OCTOBER NEWSLETTER

October 16-31



UPCOMING EVENTS

- Oct 16-18 No School
- Oct 22 Passport Testing
- Oct 24 Hot Lunch Orders Due
- Oct 25 Harvest Carnival



CHAPEL

- Oct 23 at 8:45am - Mrs. Koehler (Pre K AM)
- Oct 23 at 2:30pm - Mrs. Ashe
- Oct 30 at 2:30pm - Pastor Greg

You are always welcome and encouraged to join us for chapel. If you can't make it in person, contact the school office for the live stream link.

For the safety of our students, we ask that you please not share the live stream link on any social media.



Chapel offering collected will be put towards Thanksgiving turkeys for local families in need.

PRINCIPALS CORNER

October is the month of warm colors, pumpkins, apples, dressing up for the Harvest Carnival and World Mental Health Day, Oct. 10th. This day was created as a reminder to us that we must take care of ourselves and our children inside and out. It is important to make time to talk with children about their feelings. As a Christian school community, we are called to care for the whole person—body, mind, and spirit—just as Jesus demonstrated compassion and healing in His ministry.

Here at FLS, we are always focused on creating an environment where our children feel safe and loved. We teach them that they can lean on God's strength and the caring community around them.

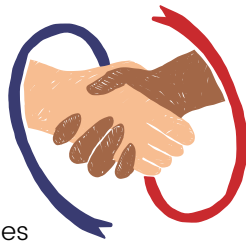
The school takes seriously the responsibility to teach them what to do in the event of an extreme emergency... such as fire, a threat on campus, etc. We conduct monthly emergency drills to prepare students and staff for these possibilities. New this year is a plan to practice a full campus evacuation drill to an offsite location in case this is ever necessary. This drill will take place on Thursday, October 24th. Please be on the lookout for an email soon that will detail this drill and give important information you will need to support this effort.

For God's Glory, Ann Ashe | Principal
administrator@flschool.org

STEWARDSHIP HOURS

Half your stewardship hours are due by the end of January. Please make sure all your completed hours are submitted to the school office or you will be billed at \$20 per hour.

- Stewardship requirements:
- Preschool: 4 hours
 - Pre K: 6 hours
 - Jr K: 10 hours
 - K-8th grade: 20 hours



- Upcoming Stewardship Opportunities
- Harvest Carnival
 - Passport Testing

YOUTH NIGHT

Join our Faith Lutheran Youth Group for a devotion, games and snacks in the community center.

Oct 27th, 4:30pm-6pm - 9th-12th grade, & National Youth Gathering Attendees

National Youth Gathering attendees must be entering 9th grade or older in September 2025. If you're interested in more information about NYG, please contact the church office at faithlutheranlacey360@gmail.com.



PASSPORT TESTING

October 22nd

Passport testing is for students in grades 1st through 6th. Make sure you're studying your maps at home!

We are looking for volunteers to test students. All volunteers are given answers. Contact the school office for more information.

NO SCHOOL



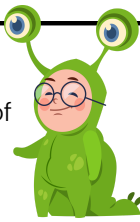
There will be no school October 16th-18th.

Childcare will be closed October 17th-18th.

Our teachers will be attending training at the Northwest District Educators Conference.

COSTUMES

Costumes may be worn to school on the day of Harvest Carnival (10/25/24)



Costume guidelines for the school day:

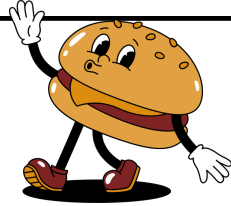
Family Friendly! No masks, no weapons, no blow-up costumes, no blood or gore. Students must be able to participate and complete their schoolwork while in their costume. If a student's costume does not follow the guidelines or becomes a distraction, the student will be asked to change.



Costumes will not be allowed to be worn to school on Halloween (10/31/24)

HOT LUNCH

November hot lunch orders need to be submitted by: October 24th



VOLLEYBALL

Come out and support our 5th-8th grade girls at their upcoming volleyball game.

October 23rd, 3:30pm at St. Mikes



LOST & FOUND

It's only October and our lost and found is almost full! If your child is missing a coat, water bottle, or any other item, the lost and found bucket is located near the school office. Please take a moment to stop by to check for any items you may be missing.

We are also asking that you please put your child's name in their coat and on their water bottle. We will do our best to check for names and get it back to the owner.



SAVE THE DATE

Saturday Night Disco Auction
April 26th, 2025

Please join us for our Next Auction Meeting:
November 13th at 5pm - Cypress Room

WINTER CRAFT FAIR

November 2nd, 9am-3pm
Faith Community Center

Come shop at the Winter Craft Fair!
See the vendor line up at
www.facebook.com/craftbazaar2022

Live raffle - tickets are \$1

Proceeds from booth rentals and raffle benefit
Faith Lutheran Youth Group



HARVEST CARNIVAL

OCTOBER 25, 2024, 5:30-7:30pm
Prize booth closes at 8:00pm

The Harvest carnival is an annual event hosted by Partners in Education (P.I.E.). It's a fun family evening with carnival games, costume contest, prize booth, and more. Costumes are encouraged, but please remember to keep them family friendly!

Ticket Information:

No Entry Fee
Game Wristband: \$10
Meal Ticket: \$5
Jail/Bail Card: \$5

Combo Ticket (game wristband & meal ticket): \$13

Presale order form went home with students on 10/11
(please contact the school office if you need an additional copy of the order form)

Ticket presale ends on 10/18
Tickets are available at the door as well

Tickets, wristbands, & jail/bail cards will be sent home with students on 10/23

DONATIONS and VOLUNTEERS NEEDED:

This event relies on donations and volunteers to be successful. Look for an email from flspie@flschool.org to sign up.

Donations Needed:

Individually Wrapped candy - these can be placed in the bins near the school office, church office, or childcare.

Desserts - please bring these to the school office the day of the event starting at 8:00am

Candy & Desserts donated to the Harvest Carnival can be submitted for stewardship hours. These hours must be turned into the school office with a receipt.



SEAHAWKS TICKETS RAFFLE

PIE is raffling off 2 tickets to a Seahawks game!
Tickets will be sold in the school office starting 10/11 and during the Harvest Carnival.

\$10 for one ticket
\$15 for two tickets

Game Information:
11/3 at 1:25pm
Section 339 - Row I - Seats 9 & 10

Winner will be drawn at the Harvest Carnival.
You do not need to be present to win.

All proceeds from the raffle will be put towards our library renovation.

